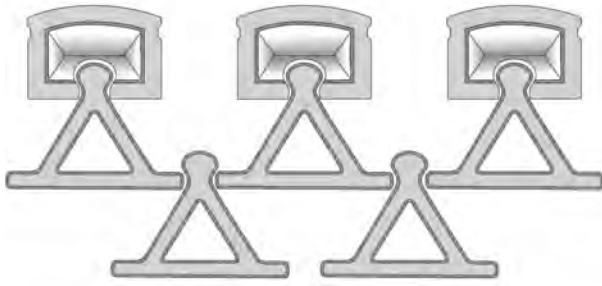


# ReMblok 30



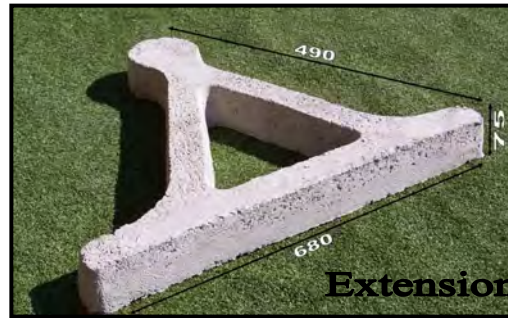
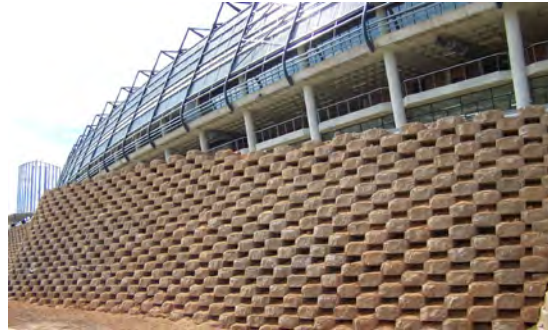
TOP VIEW OF CONFIGURATION WITH SECONDARY BLOCK EXTENSIONS



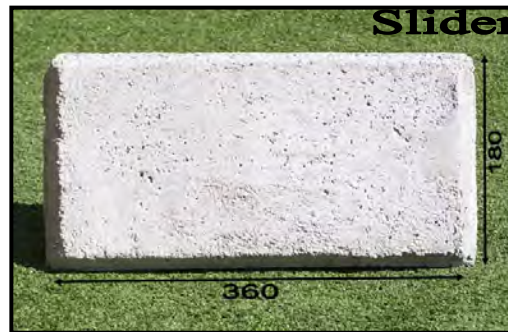
**Available  
In Rock or Smooth  
Face**



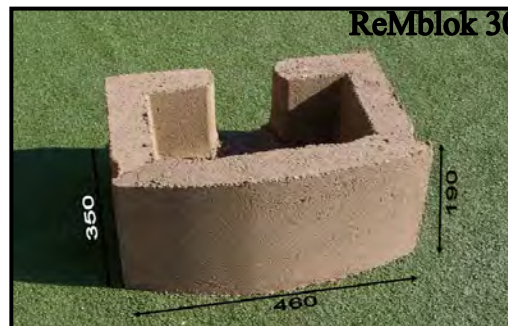
# ReMblok 30



Extension



Slider



ReMblok 30

# ReMblok 30

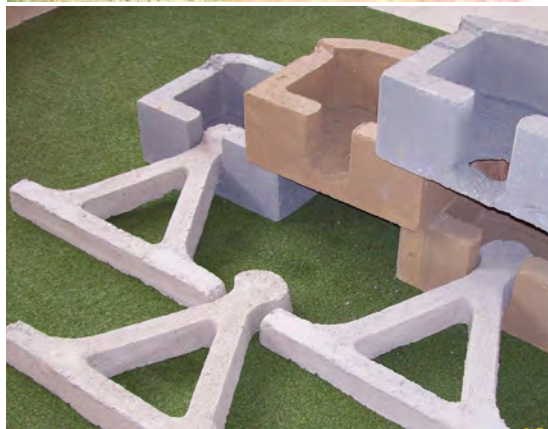
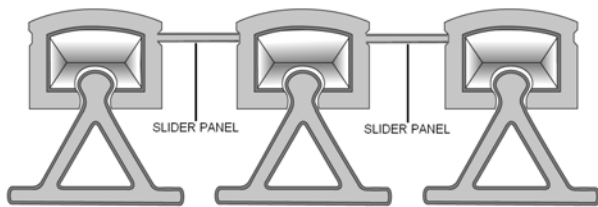


**ReMaCon Products.cc**



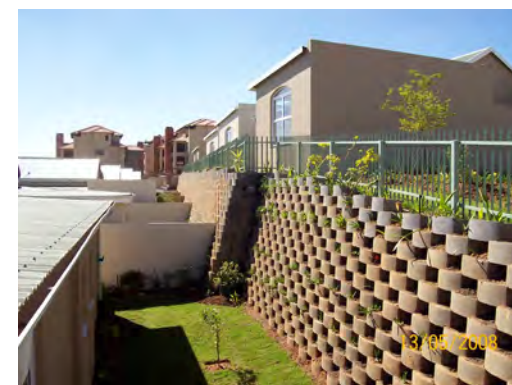
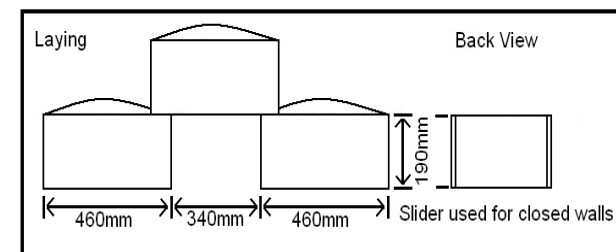
**Retaining  
Wall  
Blocks**





# ReMblok 30

TECHNICAL DATA	
ReMblok 30	
Number of blocks per m <sup>2</sup>	6.6
Mass per block	36kg
Filled block mass	60kg
Length	350mm
Width	460mm
Height	190mm
Standard wall angle	75°
Texture	Rock & Smooth
Colour	Grey & Sand



ReMblok 30

ReMblok 30

ReMaCon Products.cc



TEL: 011 393 5504  
FAX: 011 393 5502

EMAIL: REMACON@TELKOMSA.NET

WEBSITE: WWW.REMACON.CO.ZA



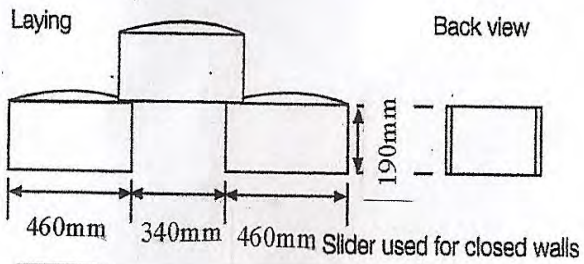
# ReMblok Slider



87 degree wall



Geogrid reinforced 87 degree wall



## Retain-a-Wall

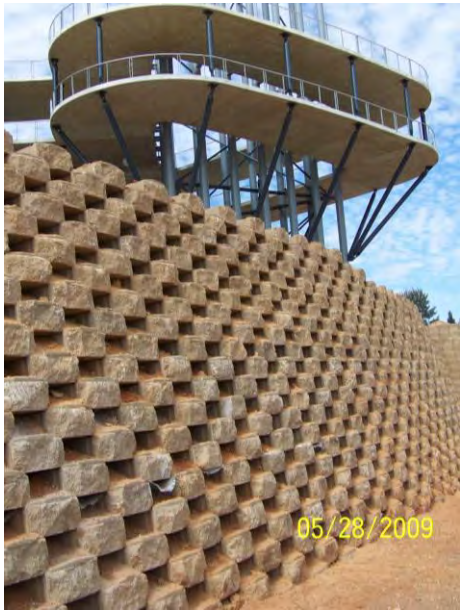
Tel : 032-947 1601  
 Cell : 082 459 1855  
 Email: [kuzzy@mweb.co.za](mailto:kuzzy@mweb.co.za)  
 Web site :



# Retain - a - Wall



Available In  
Sand or Grey  
Colour



## ReMblok 30

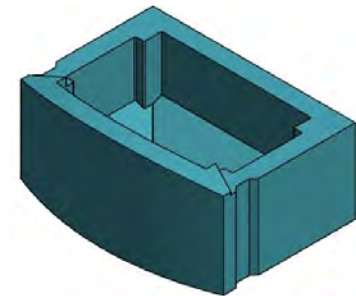
### Retaining Wall Blocks



Also Available  
In Rock Face



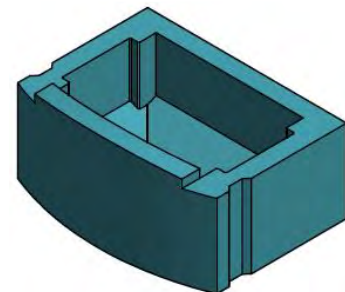
ReMblok 30 standard 75° top view



ReMblok 30 Lite 75°



ReMblok 30 vertical



ReMblok 30 Lite vertical

